

# Female Ultrasound Training Pelvis

Model 404A



## TEACH • TRAIN • PRACTICE

The gynecological ultrasound exam is an important diagnostic tool. Students gain competency with hands-on practice. Unfortunately, access to patients can be limited. The Model 404A Female Ultrasound Training Pelvis facilitates teaching and demonstration of gynecological ultrasound techniques in a non-stressful situation.

The Model 404A consists of an external female pelvic model containing a uterus, fallopian tubes, ovaries, bladder and rectal landmarks useful for scanning. The phantom has both abdominal and vaginal scanning access allowing a variety of transducer orientations.

The Female Ultrasound Training Pelvis creates a relaxed learning environment for teaching and developing ultrasound examination skills and techniques as well as demonstrating 3D ultrasound capabilities.

### Features

- External anatomy
- Abdominal and vaginal scanning access
- Uterus with endometrium and myometrium
- Ovary with follicles
- Full bladder
- Rectal landmarks
- Realistic Scanning

2428 Alameda Avenue Suite 316 • Norfolk, Virginia 23513 • USA  
Tel: 800.617.1177 • 757.855.2765 • Fax: 757.857.0523

[WWW.CIRSINC.COM](http://WWW.CIRSINC.COM)

# CIRS

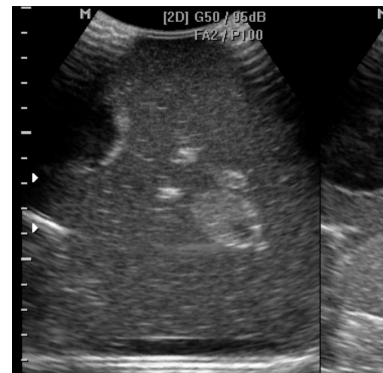
Tissue Simulation & Phantom Technology



Trans-abdominal of uterus



Trans-vaginal of uterus, bladder and rectum



Ovary with follicles

**SPECIFICATIONS**

<b>DIMENSIONS</b>	15 cm x 11 cm x 11 cm (5.9" x 4.3" x 4.3")
<b>PHANTOM WEIGHT</b>	2 kg (4.4 lbs.)
<b>MATERIALS</b>	Z-Skin™ and Zerdine®
<b>INTERNAL STRUCTURE</b>	Vaginal Canal Cervix Uterus with Endometrium, Myometrium and Uterine Cavity Fallopian Tubes Homogeneous Left Ovary Right Ovary containing follicles Iliac Vessels

**MODEL 404A INCLUDES**

QTY	COMPONENT DESCRIPTION
1	Female Ultrasound Training Pelvis
1	User Guide
-	6-Month Warranty

